



Cuyahoga County Consumer Affairs

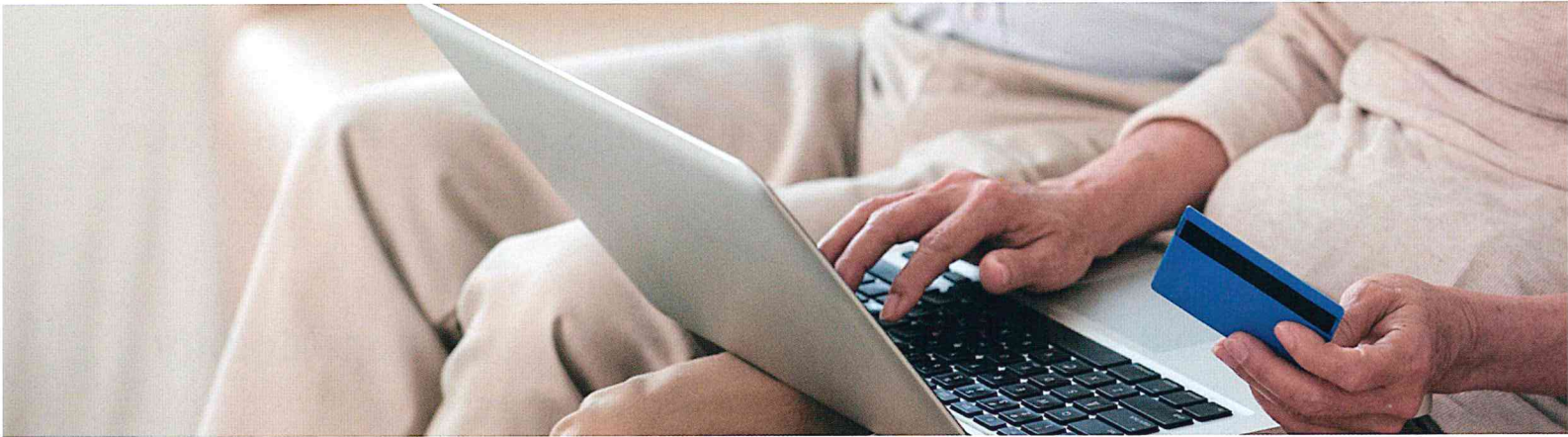
consumeraffairs.cuyahogacounty.us

SCAM SQUAD

216-443-SCAM(7226)



PROTECT YOURSELF FROM CORONAVIRUS SCAMS



3 PAYMENT METHODS TO AVOID

Only imposter scammers will demand that you pay debts, fines or fees with:

- Money wires
- E-currencies such as Bitcoin
- Retail or e-tail gift cards



Government agencies, tech companies and utilities do not accept these payments.

WATCH OUT FOR THESE SCAMS

Scammers usually want money or your personal information. Watch for scams disguised as:

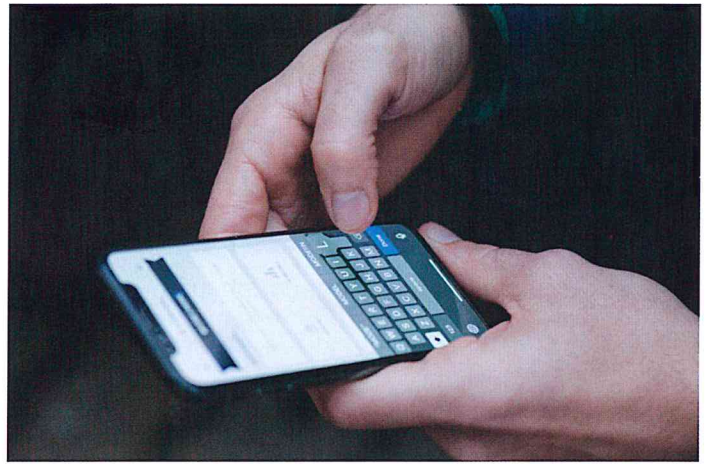
- Offers to help you get stimulus payments or grants
- Threats to arrest you or seize your accounts
- Offers to help you get Coronavirus tests, cures or vaccines
- Calls or emails from sheriff, IRS or any government agency

Never pay or reveal private info (your Social Security or account numbers) to someone who contacts you!

4 SIGNS A JOB OFFER IS A SCAM

A job is a scam if your new employer tells you to:

- Deposit a check and then send funds -- in any form -- to someone else.
- Create a bank or e-currency account for the company.
- Accept or make payments by money wire, retail gift cards or e-currency.
- Accept and reship mail or packages.



Consumer Affairs And Its Scam Squad Partners Fight Fraud.

We're Here To Help You!

216-443-SCAM (7226) • consumeraffairs.cuyahogacounty.us

Connect with us!

Learn more

consumeraffairs.cuyahogacounty.us

Ask a question

216-443-7035 (main)

Report a scam or talk to an investigator

216-443-SCAM (7226)

Follow us on Facebook and Twitter

@CuyCoConsumers



Helpful Cuyahoga County Resources:

Cuyahoga Job and Family Services

844-640-OHIO (6446) or www.benefits.ohio.gov

Division of Senior and Adult Services

216-420-6700 or hhs.cuyahogacounty.us

County Board of Health

(contact tracing, report health violations)

216-201-2000 or www.ccbh.net

MetroHealth 24/7 COVID-19 hotline

440-59-COVID/440-592-6843

United Way First Call for Help

Dial 211 to connect with trusted free services



Cuyahoga County
Together We Thrive